

Push Up Roller Shutter



A secure manual alternative when power is not available, manufactured and installed in accordance with BS EN 13241-1:2003 + A2:2016 & BS EN 12604:2017.

Roller curtain

The shutter curtain is constructed from cold rolled galvanised concave steel laths (76 mm x 22 swg). Each lath is retained by nylon end locks fixed with galvanised steel rivets. Flat 50 mm lath is available at additional cost.

Bottom rail

A rigid inverted L or T section bottom rail, formed from a cold rolled galvanised section.

Side guides and angles

A purpose cold rolled galvanised steel section 65 mm deep. Galvanised steel angles of a suitable size and thickness are supplied to support the side guides and form a secure fixing to the structure. On fix between applications, the side guides are supported and fixed to the structure via a mild steel flat bar.

Roller barrel

Constructed from mild steel tube of suitable outside diameter and wall thickness to suit shutter application. The barrel encases helical springs, which are securely fitted inside the barrel, and are supported by purpose made cast iron or sg. iron castings. The springs counter-balance the shutter.

Endplates

3 mm galvanised steel either 250 mm x 250 mm, 300 mm x 300 mm or 350 mm x 350 mm and fixed to the supporting angles, complete with cleats for hoods or fascias if required.

Operation

Manually push up and pull down with a pull down pole for taller applications.

Door locking

Guide locks are standard. Bottom rail locks are available at extra cost.

Finish

Side guides, supporting angles and door curtain are galvanised. Flats if required, are primer painted. Powder coated finish is optional and can be provided at extra cost.

Coil casings (hoods) / fascias

Coil casings or fascias can be supplied at additional cost and are supplied galvanised unless specified otherwise.

Perforated laths

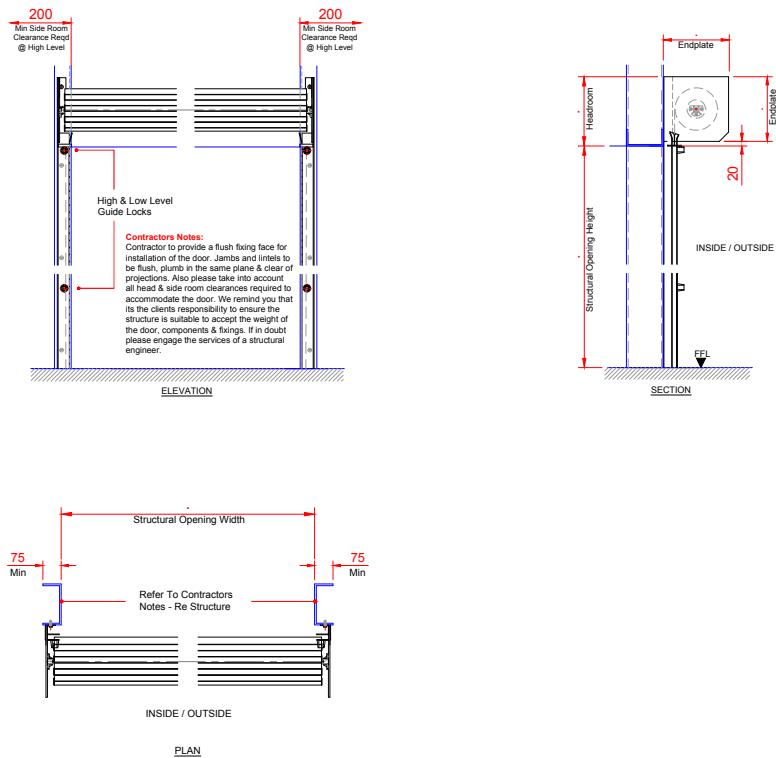
Perforated laths can be supplied at additional cost and are supplied galvanised unless specified otherwise.

Technical data

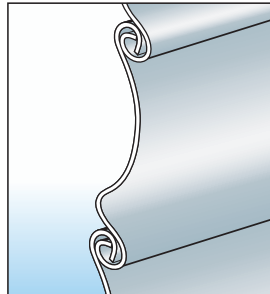
Standard size up to (W x H) ¹⁾	2500 x 2500 mm
Lath profile	76 mm concave
Weight	35 kg/m ²
Finish	- Galvanised - PPC to RAL / BS colour - Plastisol to external curtain face
Wind load, EN 12424	Up to Class 3

1) other sizes available on request

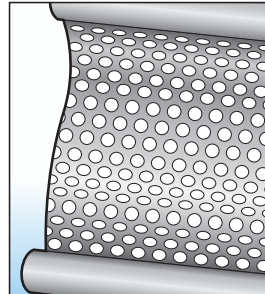
General arrangement drawing



Lath options



Solid Lath



Perforated Lath



INDUSTRIAL DOOR ENGINEERING LTD

HEAD OFFICE

Winnington Avenue, Winnington, Northwich, Cheshire CW8 4EQ

TEL: 01606 871832 FAX: 01606 871482

Email: sales@industrial-door-eng.co.uk Web: www.industrial-door-eng.co.uk

Also At

Unit 2 Parkway Industrial Estate, Wakefield Road, Ossett WF5 9JA

TEL: 01924 387070 FAX: 01924 267303

Our policy is one of continuous development and the Company reserves the right to alter our specifications and prices without prior notice.



Assessed to ISO 9001:2008
Certificate number 165

