

Insulated Roller Shutter



Thermally insulated robust roller shutters, manufactured and installed in accordance with BS EN 13241-1:2003 + A2:2016 & BS EN 12604:2017.

Roller curtain

The shutter curtain is constructed from 90 mm or 100 mm twin interlocking cold rolled galvanised steel laths, infilled with CFC free insulation. Each lath is retained by nylon endlocks fixed and secured by steel rivets. The bottom lath incorporates a rubber seal.

Headseal

100 mm or 150 mm nylon brushstrip is supplied to fix to the underside of the lintel to form a seal between the lintel and the shutter curtain.

Side guides and angles

Specially designed galvanised guide section 80 mm x 90 mm deep x 2.5 mm incorporating vertical brush seals full height to both sides of each guide. Galvanised steel angles of suitable size and thickness are supplied to support the side guides and to form a secure fixing to the structure.

Roller barrel

Constructed from mild steel tube of suitable outside diameter and wall thickness to suit shutter application. Barrels are fitted in conjunction with an appropriate safety device, i.e. Safedrive motor unit.

Endplates

Of suitable design, and ranging from 6 mm to 10 mm thickness. Fitted with suitable cleats for fixing to the structure.

Operation

A variety of electric motors are used, dependent upon the application. 415 volt 3 phase motors are normally used. A push button station is provided with "UP", "DOWN" and "STOP" buttons. Our estimate/quotation should provide the relevant details concerning the electric specification intended to be used for each particular installation, together with the electrical requirements that need to be provided by the customer.

Finish

Side guides, supporting angles and door curtain are galvanised. Non-galvanised sections are primer painted. The shutter curtain is available in a range of plastisol colours. The complete shutter can be powder coated in an extensive range of colours although powder coating is not as durable as plastisol.

Coil casings (hoods) / fascias / motor covers

Coil casings, fascias and motor covers can be supplied at additional cost and are supplied galvanised unless specified otherwise.

Windows

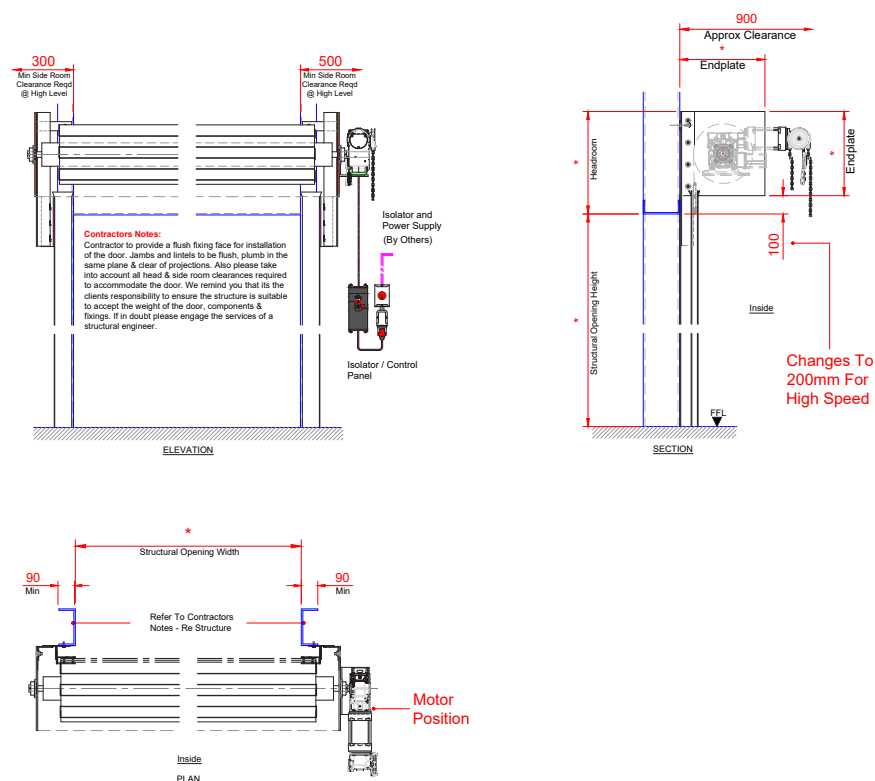
Rows of double glazed Perspex windows can be incorporated into the shutter laths at additional cost.

Technical data

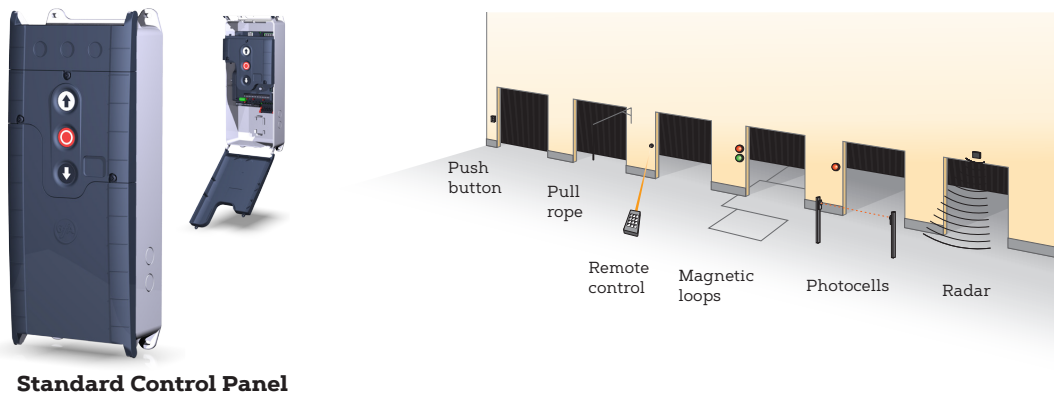
Standard size up to (W x H) ¹⁾	8000 x 8000 mm
Lath profile	100 mm depth
Power Options	240V single / 415V three phase direct drive
Weight	40 kg/m ²
Finish	- Galvanised - Plastisol to curtain
Wind load, EN 12424	Up to Class 5

1) other sizes available on request

General arrangement drawing



Automation options



INDUSTRIAL DOOR ENGINEERING LTD

HEAD OFFICE

Winnington Avenue, Winnington, Northwich, Cheshire CW8 4EQ

TEL: 01606 871832 **FAX:** 01606 871482

Email: sales@industrial-door-eng.co.uk **Web:** www.industrial-door-eng.co.uk

Also At

Unit 2 Parkway Industrial Estate, Wakefield Road, Ossett WF5 9JA

TEL: 01924 387070 **FAX:** 01924 267303

Our policy is one of continuous development and the Company reserves the right to alter our specifications and prices without prior notice.



Assessed to ISO 9001:2008
Certificate number 165

